

# HOOKS

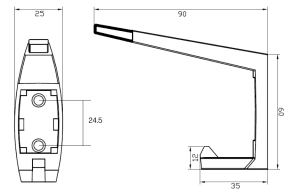


## MODA\_HOOK\_SCP

Moda Hat and Coat Hook in Satin Chrome Plate

### Specification

Material	Diecast Zinc, Alloy ZP3 Rubber Bumper
Finish	MODA_HOOK_SCP: Satin Chrome Plate
Also Available	<a href="#">MODA_HOOK_DESIGNER</a> : Designer Black <a href="#">MODA_HOOK_ANMB</a> : Antimicrobial Coating MODA_HOOK_SPP: Satin Pearl Plate
Mounting	Concealed Screw Fix
Dimensions	Height: 60mm x Width: 25mm x Projection: 90mm
Note	* This unit is accessible compliant when installed in accordance with AS1428.1. guidelines.  * It is recommended that any individual unit is installed whereby it clears any other fixtures by at least 150mm and not carry loads any greater than 8kg.



### Downloads & Resources

Care & Maintenance  
 Installation instructions  
 Associated Videos  
 Stainless Steel Cleaning and Maintenance

The photographs and line drawings of the products presented above are representational only.  
 Metlam Australia Pty Ltd reserves the right to, and from time to time, make changes and improvements in design and dimensions.