

# GRAB RAILS & BACK RESTS



## MLR112

90° Ambulant Grab Rail 450x450mm

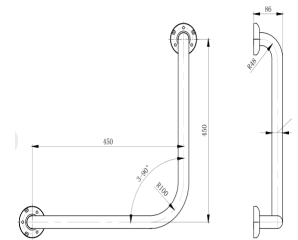
### Specification

Material	#304 Stainless Steel - 32mmØ
Finish/Specify	Satin Stainless Steel
Mounting	Concealed Fix - 78mmØ Mount
Also Available	<a href="#">MLR112 DESIGNER</a> : Designer Matte Black <a href="#">ANMB MLR112</a> : Antimicrobial
Note	Suits Right Hand or Left Hand installation

\* This unit is ambulant compliant when installed in accordance with AS1428.1 guidelines.

\*It is the responsibility of the installer to ensure that the surface/substrate that the unit is installed upon is suitable to withstand the weight bearing loads of the unit and if required as per AS1428 / Australian building code regulations.

\*The materials and construction of this grab rail meets AS1428.1 force requirements to be able to withstand a force of 1100Nm.



### Downloads & Resources

Care & Maintenance  
 Installation instructions  
 Revit  
 Associated Videos  
 Stainless Steel Cleaning & Maintenance

The photographs and line drawings of the products presented above are representational only. Metlam Australia Pty Ltd reserves the right to, and from time to time, make changes and improvements in design and dimensions.