

GRAB RAILS & BACK RESTS

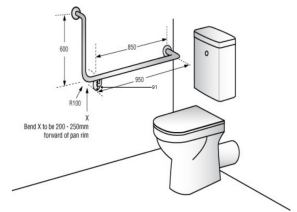


MLR104X_DESIGNER

90° Flush Mount Side Wall 950x600mm RH in Designer Black

Specification

Material	#304 Stainless Steel - 32mmØ
Finish	Designer Matte Black
Mounting	Concealed Fix - 78mmØ Mount
	Stand off 55mm
Also Available	MLR104 X: Satin Stainless Steel ANMB MLR104 X: Antimicrobial
Note	<p>* This unit is accessible compliant when installed in accordance with AS1428.1 guidelines.</p> <p>*It is the responsibility of the installer to ensure that the surface/substrate that the unit is installed upon is suitable to withstand the weight bearing loads of the unit and if required as per AS1428 / Australian building code regulations.</p> <p>*The materials and construction of this grab rail meets AS1428.1 force requirements to be able to withstand a force of 1100Nm.</p>



Downloads & Resources

Care & Maintenance
 Installation instructions
 Associated Videos
 Stainless Steel Cleaning & Maintenance

The photographs and line drawings of the products presented above are representational only. Metlam Australia Pty Ltd reserves the right to, and from time to time, make changes and improvements in design and dimensions.