

# HOOKS



## 700\_SS\_ROBEHOOK

Robe Hook – Concealed Fix in Stainless Steel

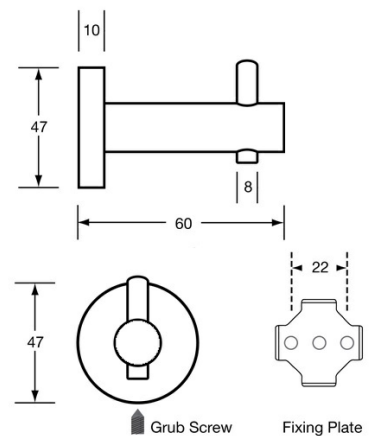
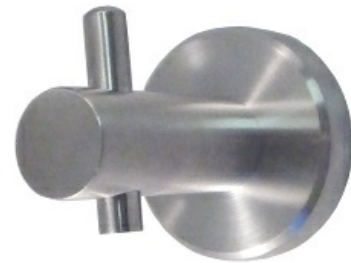
### Specification

Material	#304 Stainless Steel
Finish	Satin Stainless Steel
Mounting	Concealed Screw Fix via Fixing Plate Allen Key Supplied
Dimensions	47x47x60mm

It is recommended that any individual unit is installed whereby it clears any other fixtures by at least 150mm and not carry loads any greater than 8kg.

Also Available [700 ROBEHOOK ANMB](#); Antimicrobial

Note \* This unit is accessible compliant when installed in accordance with AS1428.1. guidelines.



Grub Screw

Fixing Plate

### Downloads & Resources

Care & Maintenance

Installation instructions

Associated Videos

Stainless Steel Cleaning & Maintenance

*The photographs and line drawings of the products presented above are representational only. Metlam Australia Pty Ltd reserves the right to, and from time to time, make changes and improvements in design and dimensions.*